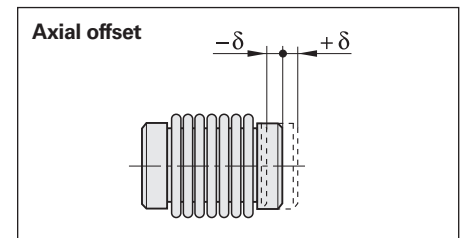
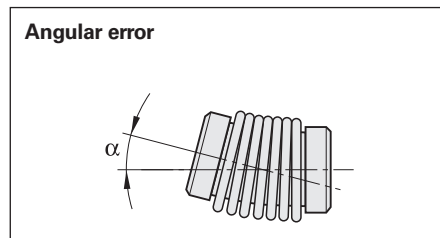
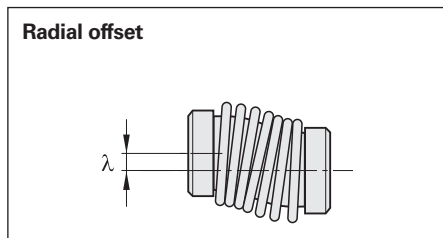


Shaft couplings

| | ROC/ROQ/ROD 400 | | | | ROD 1930 ROD 600 | | ROC/ROQ/ ROD 1000 |
|---|------------------------------------|------------------------------------|------------------------------------|------------------------------------|-------------------------------------|----------|-----------------------------------|
| | Diaphragm coupling | | | | Diaphragm coupling | | Metal bellows coupling |
| | K 14 | K 17/01 K 17/06 | K 17/02 K 17/04 K 17/05 | K 17/03 | C 19 | C 212 | 18 EBN 3 |
| Hub bore | 6/6 mm | 6/6 mm 6/5 mm | 6/10 mm 10/10 mm 6/9.52 mm | 10/10 mm | 15/15 | | 4/4 mm |
| Galvanic isolation | – | ✓ | ✓ | ✓ | – | ✓ | – |
| Kinematic transfer error* | ±6" | ±10" | | | ±13" | | ±40" |
| Torsional rigidity | 500 $\frac{\text{Nm}}{\text{rad}}$ | 150 $\frac{\text{Nm}}{\text{rad}}$ | 200 $\frac{\text{Nm}}{\text{rad}}$ | 300 $\frac{\text{Nm}}{\text{rad}}$ | 1700 $\frac{\text{Nm}}{\text{rad}}$ | | 60 $\frac{\text{Nm}}{\text{rad}}$ |
| Torque | ≤ 0.2 Nm | ≤ 0.1 Nm | | ≤ 0.2 Nm | ≤ 3.9 Nm | ≤ 5 Nm | ≤ 0.1 Nm |
| Radial offset λ | ≤ 0.2 mm | ≤ 0.5 mm | | | ≤ 0.3 mm | | ≤ 0.2 mm |
| Angular error α | ≤ 0.5° | ≤ 1° | | | ≤ 1.5° | | ≤ 0.5° |
| Axial offset δ | ≤ 0.3 mm | ≤ 0.5 mm | | | ≤ 1.7 mm | | ≤ 0.3 mm |
| Moment of inertia (approx.) | $6 \cdot 10^{-6} \text{ kgm}^2$ | $3 \cdot 10^{-6} \text{ kgm}^2$ | | $4 \cdot 10^{-6} \text{ kgm}^2$ | $15 \cdot 10^{-6} \text{ kgm}^2$ | | $0.3 \cdot 10^{-6} \text{ kgm}^2$ |
| Permiss. shaft speed | 16000 rpm | | | | 20000 rpm | 6000 rpm | 12000 rpm |
| Tightening torque of clamping screws (approx.) | 1.2 Nm | | | | 1.37 Nm | | 0.8 Nm |
| Mass | 35 g | 24 g | 23 g | 275 g | 75 g | | 9 g |

* With typical mounting tolerances: radial offset $\lambda = 0.1 \text{ mm}$; angular error $\alpha = 0.09^\circ$ (0.15 mm over 100 mm)



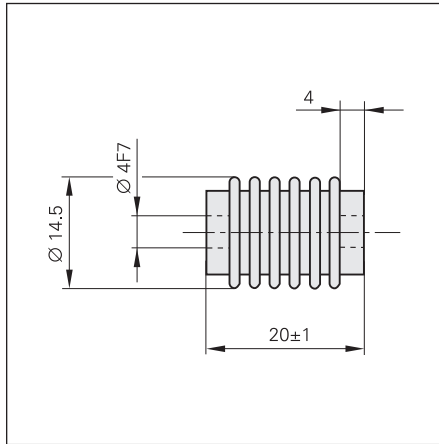
Mounting accessories

Screwdriver bits

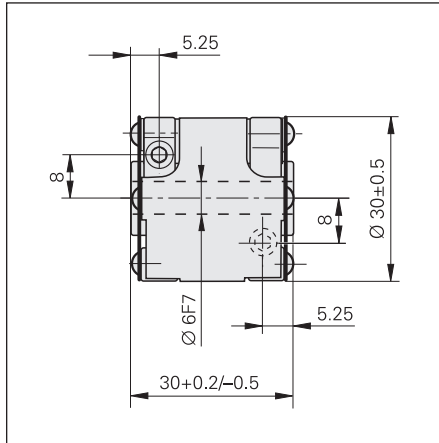
Screwdriver

See page 18.

18 EBN 3 metal bellows coupling
 For the ROC/ROQ/ROD 1000 series
 with **4 mm shaft diameter**
 ID 200393-02

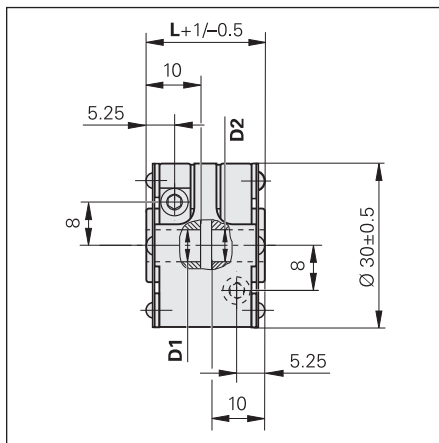


K 14 diaphragm coupling
 For the ROC/ROQ/ROD 400 series
 with **6 mm shaft diameter**
 ID 293328-01

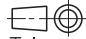


Recommended fit for
 the mating shaft: h6

Diaphragm coupling K 17
 With galvanic isolation
 For the ROC/ROQ/ROD 400 series
 with **6 mm or 10 mm shaft diameter**
 ID 1246841-xx



| K 17 Variant | D1 | D2 | L |
|--------------|---------|-----------|-------|
| 01 | Ø 6 F7 | Ø 6 F7 | 22 mm |
| 02 | Ø 6 F7 | Ø 10 F7 | 22 mm |
| 03 | Ø 10 F7 | Ø 10 F7 | 30 mm |
| 04 | Ø 10 F7 | Ø 10 F7 | 22 mm |
| 05 | Ø 6 F7 | Ø 9.52 F7 | 22 mm |
| 06 | Ø 5 F7 | Ø 6 F7 | 22 mm |

mm

 Tolerancing ISO 8015
 ISO 2768 - m H
 ≤ 6 mm: ±0.2 mm